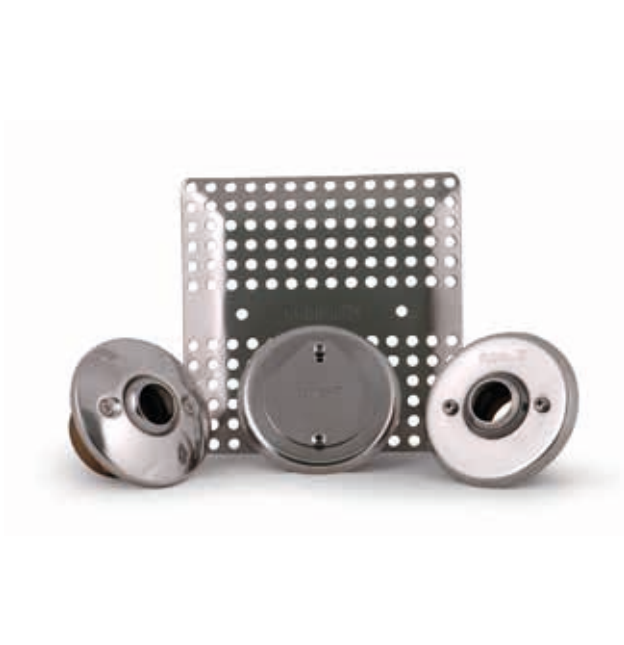




**Pahlén** <sup>®</sup>  
swimming pool equipment

stainless steel fittings  
for concrete pools

# stainless steel pool fittings



When it comes to achieving an excellent finish on your next pool project, stainless steel pool fittings from Pahlén will meet the needs of the most discerning customer.

Delivering form and function where clean lines are a must, the range includes inlets, vac points, main drains and skimmers for concrete pools.

All fittings are produced from AISI acid-proof stainless steel with visible areas brightly polished to maximise the look of a pool.

Skimmers are supplied as standard with front access to the basket, avoiding the need for an unsightly lid to spoil the quality of the pool surround.

## classic inlet

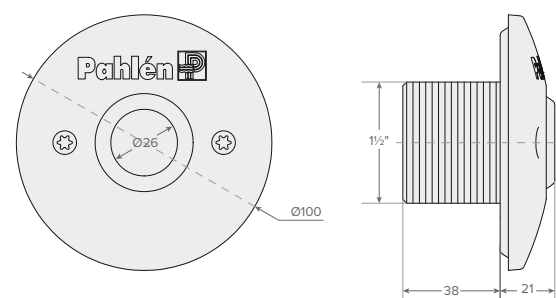
The water returns to the pool cleaned and heated via the inlets. These can be directed slightly upwards to facilitate cleaning of the surface water.

## features

- Acid proof stainless steel AISI 316L, polished front.
- Adjustable nozzle Ø 26 mm.
- Suitable for all types of pools.
- Recommended flow capacity 6 m<sup>3</sup>/hr (maximum).

## code

11 65 004 015





### suction fitting

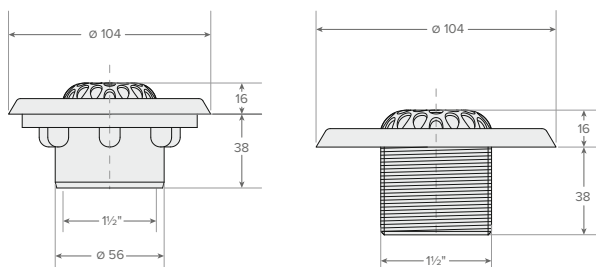
A suction nozzle is recommended near the bottom of the pool to prevent the water from becoming stagnant.

#### features

- Polished front.
- Acid proof stainless steel AISI 316L.
- Suitable for concrete pools.
- Grille opening.
- Outside thread 1½".
- Recommended flow capacity 2 m³/hr (maximum).

#### code

11 65 009 015



### vac point

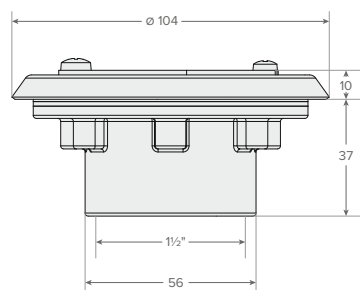
If the pool is equipped with an overflow, a vacuum hose connection is used for the vacuum hose during cleaning of your pool.

#### features

- Polished front.
- Acid proof stainless steel AISI 316L.
- Suitable for all types of pools.
- Suction nozzle with cover equipped with turning cover.
- For concrete and liner pools.
- Inside thread 1½".

#### code

11 65 014 015



# stainless steel pool fittings



## main drain

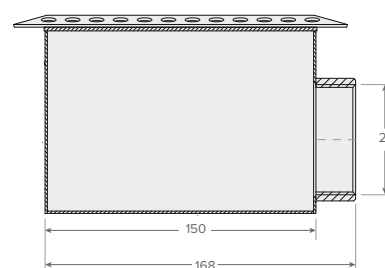
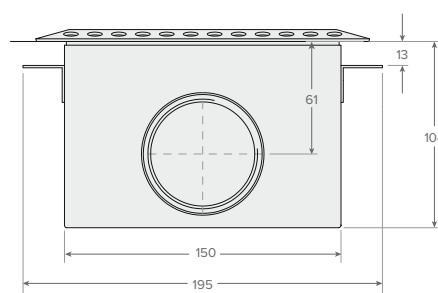
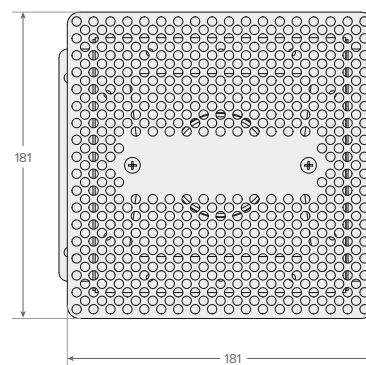
For larger swimming pools it is a good idea to install a bottom outlet to prevent stagnant water at the bottom of the pool.

## features

- Polished front grating.
- Acid proof stainless steel AISI 316L.
- Suitable for all types of pools.
- For concrete pools with flanges for embedding in the concrete floor.
- The polished grate is detachable with two screws.
- Angled outlet.

## code

11 65 040 000





### widemouth skimmer

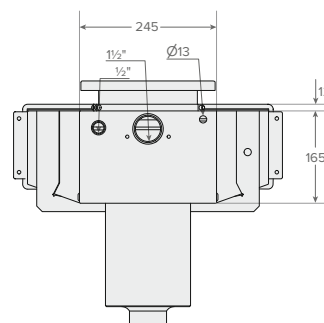
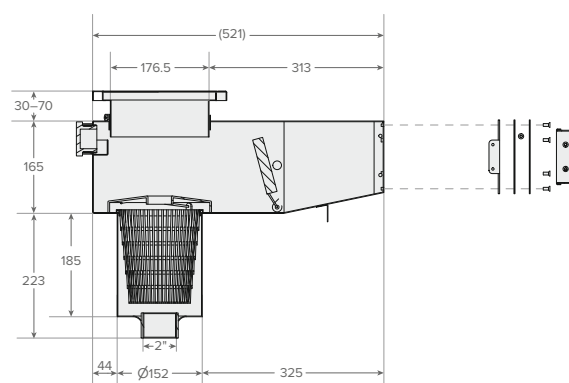
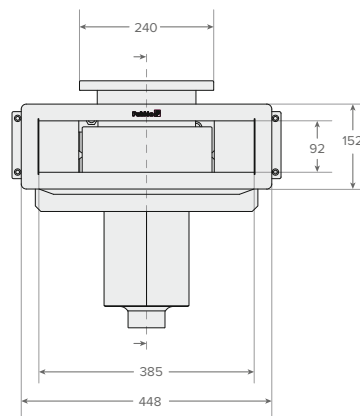
Open wide skimmer in a exclusive design. Pahlén  
Widemouth skimmer gives high water level with  
efficient extraction of debris and circulation.

#### features

- Acid proof stainless steel AISI 316L.
- Widemouth skimmer with vertically adjustable lid 30–70 mm.
- Polished front.
- Opening – 385 x 92 mm.
- Flap weir made of stainless steel.
- Filtration outlet internal thread – 2".
- Overflow outlet internal thread – 1½".
- Water refill inlet internal thread – ½".
- Connection for water level control Ø 13 mm.
- Large, high-capacity strainer basket.
- Flow capacity up to 10 m³/hr.

#### code

11 65 031 000



# stainless steel pool fittings



## standard neck skimmer

Water leaves the pool through the skimmer which increases the surface flow rate and moves surface debris into the skimmer. The debris is collected in a filter basket and the water flows on to the sand filter for particle cleaning.

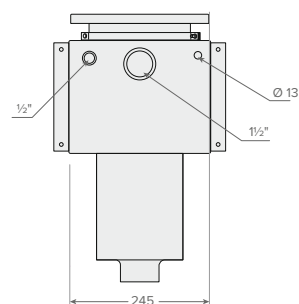
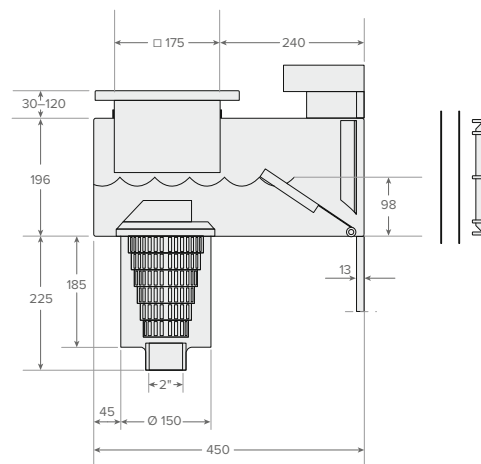
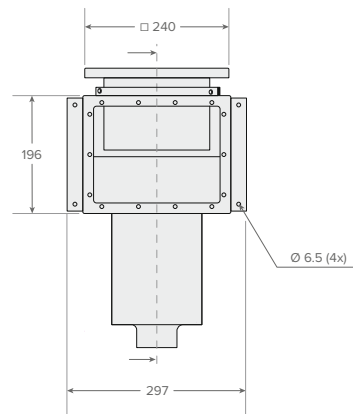
### features

- Available as front access and with lid.
- Polished front.
- Acid proof stainless steel AISI 316L.
- Vertically adjustable collar.
- Flap weir made of stainless steel.
- Polished, pattern-rolled cover.
- Equipped with large, high-capacity filter basket.
- Connection for water level control.
- Flow capacity 12 m<sup>3</sup>/hr (maximum).

### code

11 65 030 000 (front access)

11 65 030 010 (with lid)





### extended neck skimmer

Water leaves the pool via a skimmer, which makes the flow rate at the surface increase and moves particles on the water surface into the skimmer. These particles are collected in a filter basket.

#### features

- Made of acid proof stainless steel AISI 316L.
- Vertically adjustable collar.
- Flap weir made of stainless steel.
- Polished, pattern-rolled cover.
- Equipped with large, high-capacity filter basket.
- Connection for water level control.
- Flow capacity 12 m<sup>3</sup>/hr (maximum).

#### code

11 65 032 000

