



GC Hub

Pool and Spa Control Panels

Pool and spa equipment is now far more complicated than it has ever been and owners are looking for more automation and simpler, even remote, control over its function.

GC Hub Control Panels have full, in-house technical support from Golden Coast.

GC Hub Control Panels

Pool and Spa Control Panels are tailored to meet the needs of individual projects, from a basic water top-up control for a domestic pool to multiple bodies of water on a commercial project. Equipment controlled by the panel isn't limited to pumps and filtration; lighting, heating and air handling can just as easily be run from the Control Panel.

Each panel design starts with an efficient specification process that has been developed to save time and money. This quickly establishes what equipment needs to be controlled, so that a custom-fit solution can be created. All the design and build work is done in-house and each control panel is built specifically for one customer and their particular installation; nothing is off-the-shelf. CAD drawings can be supplied for each build.

The control panels are available as either single or three-phase units. They may be button operated, controlled by a high-definition IP65 touch screen or by wireless remote and can be set up for remote monitoring as well as control. The panels can include Variable Speed Drives for energy efficiency. Every GC Hub Control Panel is supported with full in-house technical support from Golden Coast and we can also customise the front of the panel to include your details.

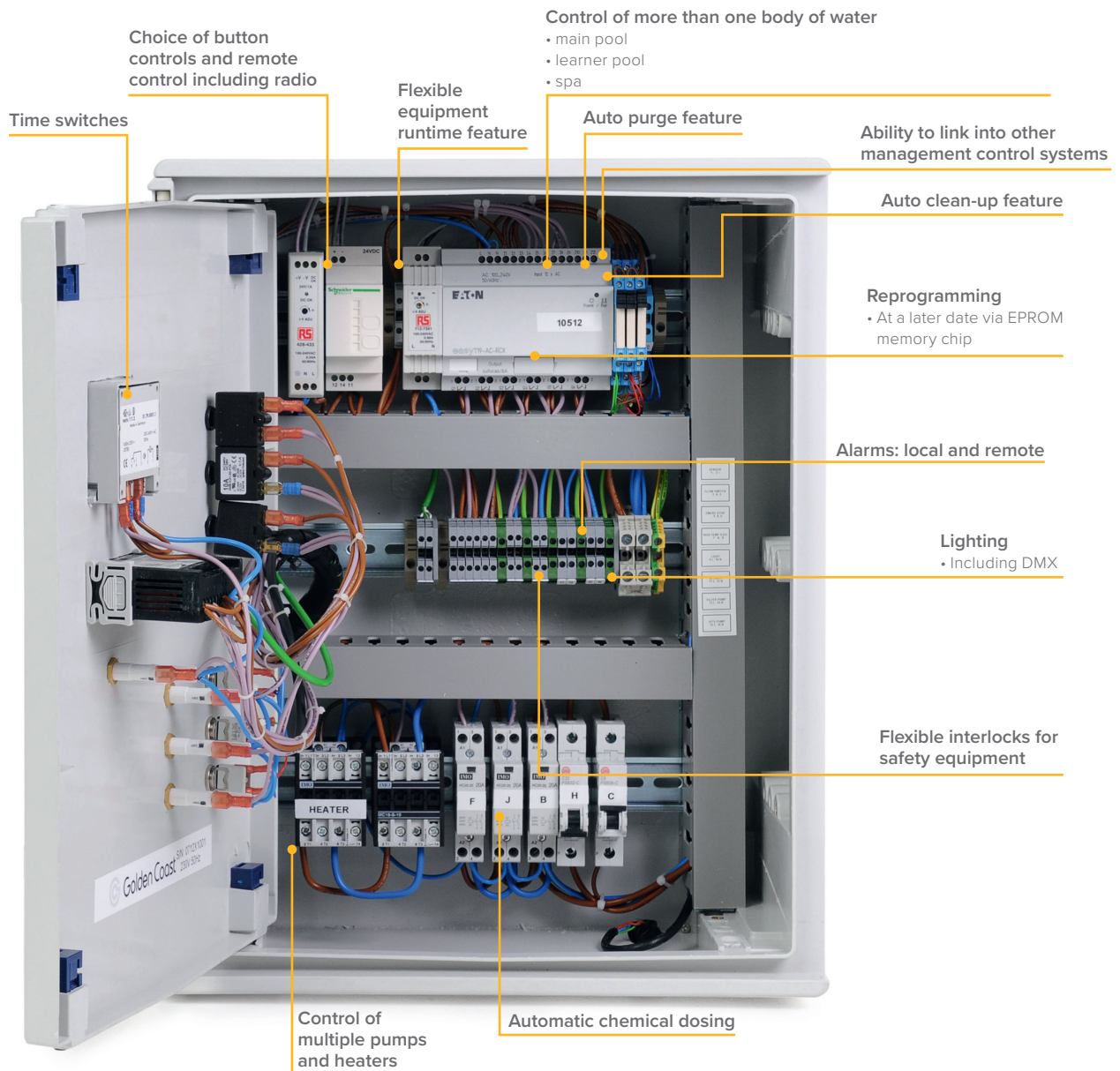


Panels are capable of controlling the following:

- Filter pump.
- Booster pump.
- Feature pump.
- Blower.
- Heater (economy mode available for spas to save energy).
- Temperature.
- LED or traditional lighting.
- Run timers.
- Purge timer.

Other features include:

- Most Programmable Logic Controller (PLC) included can be upgraded or altered at a later date.
- Full in house programming tailored to the customers' requirements.
- Modular system allows for multiple hardware configurations.
- Remote access with passcode protection via modem / GPRS / GSM / Web Server / VNC.
- Upgradable for future-proofing.
- Full alarm reporting as requested, to ANSI / ISA standards.
- Multiple fieldbus options, Ethernet, CANbus etc.
- Incorporated audio output with MP3 stereo.



Panel Options



Exposed Controls

Standard control panel complete with:

- MCB's
- Motor protection
- Mechanical clock
- Digital thermostat
- Switches
- Lights



Lockable Door

Control panel complete with:

- MCB's
- Motor protection
- Mechanical clock
- Digital thermostat
- Switches
- Lights
- Lockable door
- Vision panel



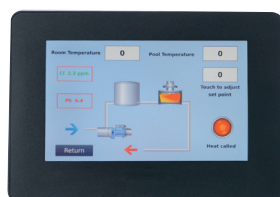
Standard Touch Screen

- Available in a choice of 4.3", 5.7" or 7" touch screen
- All controls, MCB's and motor protection contained within the panel
- Standard definition only
- Fully upgradable (5.7" screen only). Control capacity can be added
- Remote access
- Email functions
- Alarms and many other options available



High Definition Touch Screen

- Available in 7" touch screen only
- All controls, MCB's and motor protection contained within the panel
- High definition
- Fully upgradable, control capacity can be added
- Remote access
- Email functions
- Multi function – audio and video
- Alarms and many other options available
- Tablet and iPhone compatible



A range of touch screens are available.

Panel Accessories



Blue LED button with pump symbol

Supplied with 1.9m cable

Code

25 00 796 340



Blue LED button with blower symbol

Supplied with 1.9m cable

Code

25 00 796 350



Blue LED button with light symbol

Supplied with 1.9m cable

Code

25 00 796 360



3 button oval touchpad with blower, light and pump symbols

Supplied with 1.9m lead

Code

25 86 796 085



2 button round touchpad with pump and blower symbols

Supplied with 1.9m lead

Code

25 86 796 055



3 button round touchpad with pump and blower symbols

Supplied with 1.9m lead

Code

25 86 796 065



Latching air switch - bottom outlet

Code

25 86 796 210



Latching air switch - side outlet

Code

25 86 796 215



Momentary air switch for electronic control panels

Code

25 86 796 212

Panel Accessories



Blue LED button with pump symbol

Supplied with 1.9m cable

Code

25 00 796 340



Blue LED button with blower symbol

Supplied with 1.9m cable

Code

25 00 796 350



Blue LED button with light symbol

Supplied with 1.9m cable

Code

25 00 796 360



Hard push button and back nut - white plastic

Code

25 00 796 007



Hard push button and back nut - chrome

Code

25 00 796 009



Hard push button insert

Code

25 00 796 010



Control button extension lead

Codes

- 10 m: 25 00 796 410
- 20 m: 25 00 796 420
- 30 m: 25 00 796 430
- 40 m: 25 00 796 440



Distributed in the UK by Golden Coast Ltd

Golden Coast Ltd | Fishleigh Road | Roundswell Commercial Park West | Barnstaple | Devon | EX31 3UA

Phone: +44 (0) 1271 378 100 | Fax: +44 (0) 1271 371 699 | Email: swimmer@goldenc.com | Web: www.goldenc.com

 www.facebook.com/goldencoastltd

 twitter.com/goldencoastltd

©2018 Golden Coast Ltd

As a quality assured company we reserve the right to alter and improve the specification of products as deemed necessary.

Registered in England and Wales 2420044 VAT Reg. No 540 4110 02

